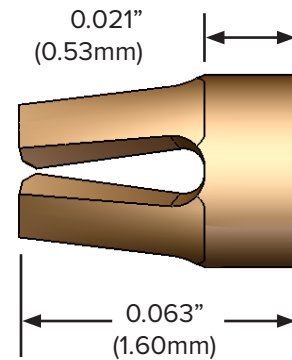
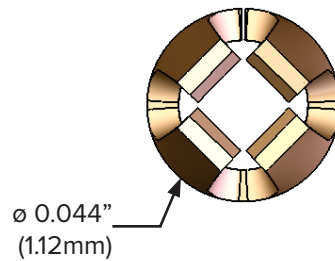
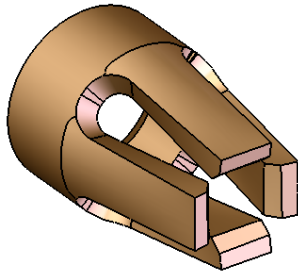


250 SERIES

FOUR FINGER CONTACT CLIPS



TECHNICAL PRODUCT DATA

WEISS-AUG PART NUMBER	CLIP TYPE	TEST PIN DIAMETER	OPERATING RANGE PIN DIAMETER	MAXIMUM INSERTION FORCE	MINIMUM WITHDRAWAL FORCE	MATERIAL
1-2-3001-25001	250	0.017" (0.432 mm)	0.015" - 0.025" (0.38mm - 0.64mm)	350g	100g	C17200
1-2-3001-25002	250L	0.017" (0.432 mm)	0.015" - 0.023" (0.38mm - 0.53mm)	150g	50g	C17200
1-2-3001-25003	250SL	0.017" (0.432 mm)	0.015" - 0.023" (0.38mm - 0.53mm)	60g	35g	C17200

NOTES:

1. All force data relates to unplated clips.
2. Tests performed with polished steel bullet nose pins.
3. All clips manufactured from BeCu alloy C17200 1/2 hard material, heat treated post forming.

Suffix Definitions: "L" = Low Force "SL" = Super Low Force "UL" = Ultra Low Force "H" = Heavy Force

